

A NEW SPECIES OF MELOIDAE (COLEOPTERA)
FROM MALAYSIA

MOHAMED SALLEH MOHAMEDSAID

Jabatan Biologi, Universiti Kebangsaan Malaysia, Kuala Lumpur, Malaysia

ABSTRACT

A new species of blister beetle, *Zonitoschema gombakiensis*, is described from Malaysia.

The genus *Zonitoschema* Peringuey (1909) has not been recorded previously from Malaysia. It is represented there by the following new species.

I thank R. B. Selander for critical reading of the manuscript.

Zonitoschema gombakiensis Mohamedsaid, **new species**

Description. Body length from frontal suture to apices of elytra 13.0 mm; color yellowish. Head 2.0 mm long, 1.1 × as wide as long, widest across eyes; cephalic outline triangular; sides above eyes arcuate; punctures large, dense; pubescence short, dense. Eyes large, on upper side approximate, with interocular region 1/3 as wide as eyes, on under side subcontiguous; anterior margin deeply emarginate opposite antennal insertion. Antennae filiform, very long; segment I-II light brown, rest dark brown; II short, 0.7 × as long as, narrower than III; IV-X subequal, arcuate, narrower than III; V reaching base of pronotum; XI fusiform, 1.8 × as long as III. Clypeus narrowed to apex; basal region with punctures as on head; apical region smooth, sparsely pubescent. Labrum longer than wide, depressed at middle, apical margin densely clothed with brushlike hairs. Mandibles long, curved, black at apices. Maxillary palpi (Fig. 1) with segment III-IV dark brown, moderately dense with short pubescence. Maxillary galeae prolonged in front of mandibles, with pectinate hairs at apices. Labium (Fig. 2) deeply emarginate; mentum oval, longer than wide; labial palpi with apical segment dark brown. Pronotum 2.2 mm long, 1.1 × as long as wide, campanuliform, shiny; sides subparallel; anterior margin barely curved; posterior margin flared, reflexed; punctures and pubescence as on head. Scutellum triangular, base twice as wide as apex; pubescence short, sparse. Elytra elongate, subparallel, surface densely covered with small punctures and short pubescence. Legs long, slender, dark-brown except for basal part of tibiae, and femora; tibial spurs similar to each other, spiniform; tarsal claws with upper blade thick and 2 rows of pectinations, one row shorter than the other, the lower blade thin, smooth. Ventral surface densely covered with short pubescence.

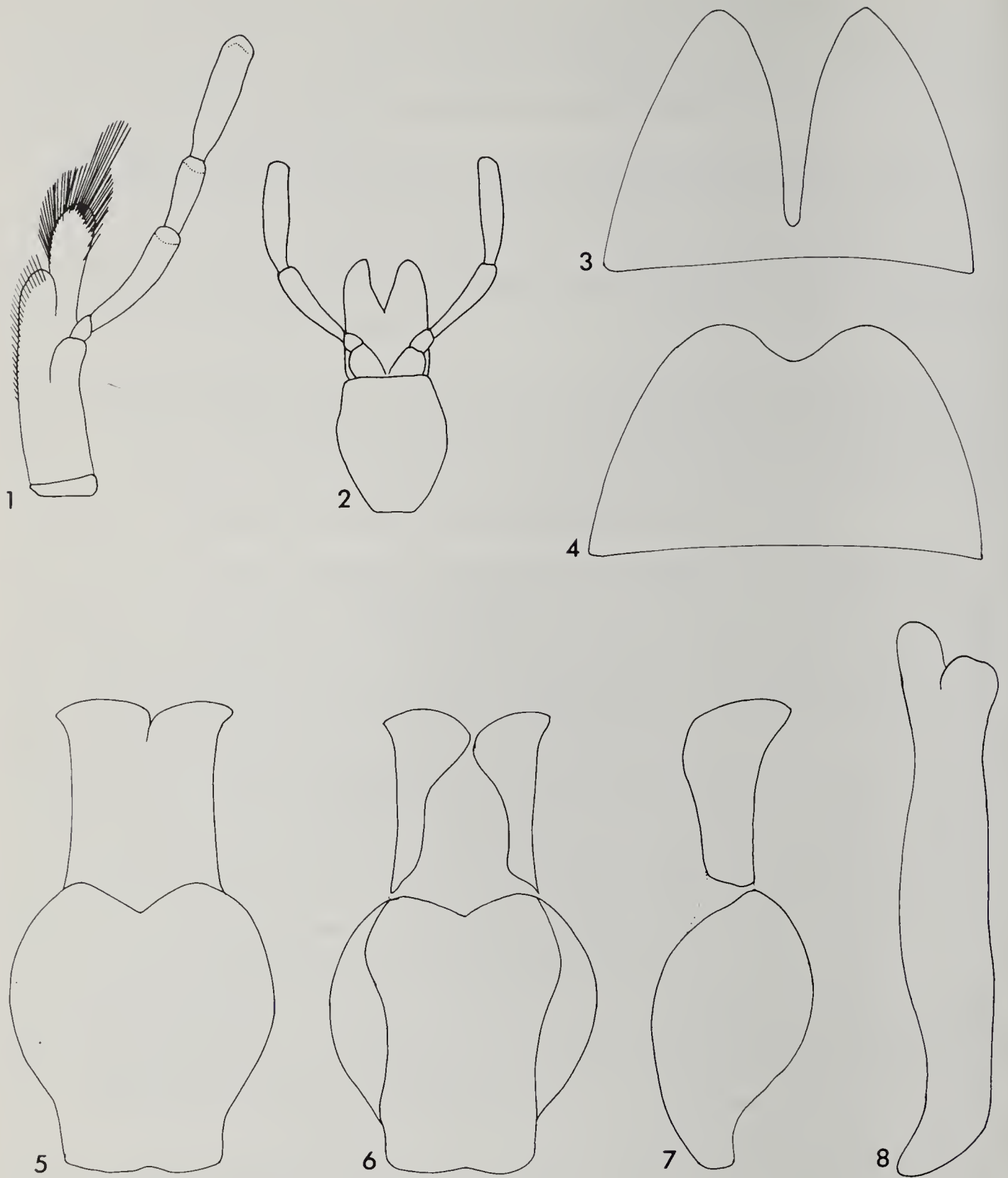
Male. Fifth visible abdominal sternum deeply emarginate. Sixth visible abdominal sternum (Fig. 3) cleft nearly to base. Pygidium (Fig. 4) deeply emarginate. Genitalia as in Figs. 5-8; aedeagus without hooks; gonoforceps with apical piece cleft, the basal piece sinuate on both apical and basal margins.

Type-material. Holotype, male, MALAYA: Gombak, 22-III-63, G. C. Sander-son, at light, in the collection of R. B. Selander, University of Illinois.

Remarks. This species is distinguished from *Zonitoschema ennsi* Kaszab (1958) [= *Zonitis philippinensis* Pic (1944)], described from Philippines, in having the eyes very close to each other on both the upper and lower sides, and the thorax campanuliform and densely punctate.

LITERATURE CITED

- KASZAB, Z. 1958. Neue Meloiden-Namen (Coleoptera). Ann. Hist. Nat. Mus. Nat. Hungary, Tomus L, Ser. nova IX:189-191.
- PERINGUEY, L. 1909. Descriptive catalogue of the Coleoptera of South Africa. Trans. Roy. Soc. South Africa, vol. 1:165-297, XXII-XXIV pls.
- PIC, M. 1944. L'Échange, Revue Linneenne, numero special, Opuscula martialia XIII.



Figs. 1-8, *Zonitoschema gombakiensis*: 1, Maxilla; 2, Labium; 3, Sixth visible abdominal sternum; 4, Pygidium; 5, Gonoforceps, dorsal view; 6, Gonoforceps, ventral view; 7, Gonoforceps, lateral view; 8, Aedeagus, lateral view.

